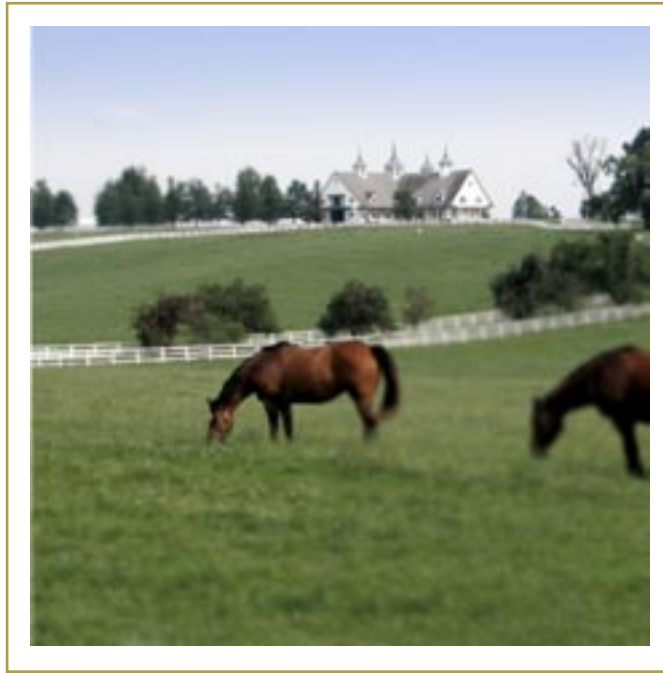


Welcome to the



BLUEGRASS LIFESTYLE

KENTUCKY LAND



SALES.COM

LIFESTYLE



KENTUCKY LAND



SALES.COM

INTEGRITY



With its rolling grasslands, stone fence rows, black-board horse fences and tree-lined roads, central Kentucky's Bluegrass region is one of the most beautiful and bucolic areas in North America.

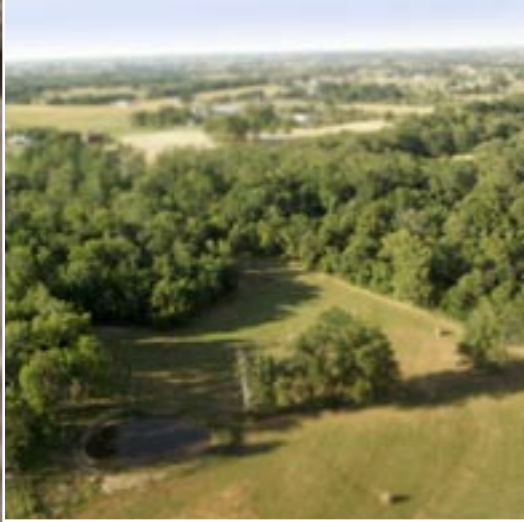
When you are ready to unwind and rejuvenate, you are ready for the Bluegrass lifestyle.

Discover a land where life moves at a more leisurely pace, following the grazing of graceful horses that adorn this gorgeous countryside.

KENTUCKY LAND



SALES.COM



KENTUCKY LAND



SALES.COM

KENTUCKY LAND SALES • POST OFFICE BOX 97 • PERRYVILLE, KENTUCKY 40468 USA TEL: 888-2-KY-LAND (888-259-5263)

BENNINGTON FIELDS



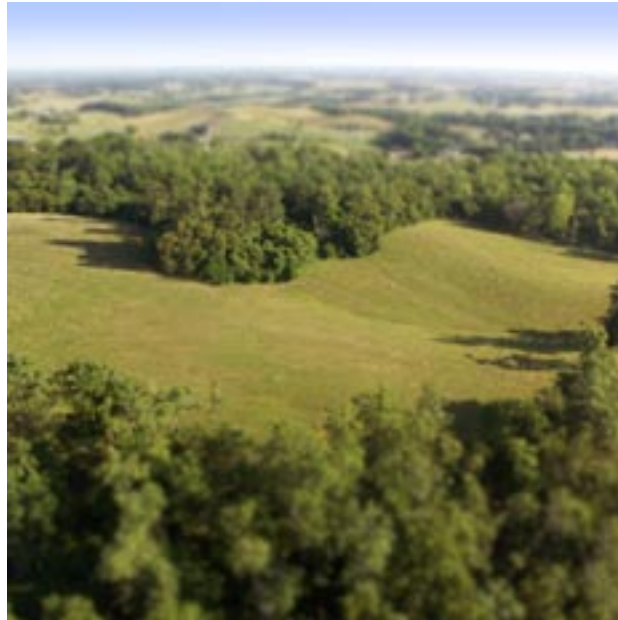
Nestled between the mountains and the rolling Bluegrass, Bennington Fields' exceptional properties are distributed over more than 100 acres of prime bluegrass in the Wilderness Trace region of Kentucky. Bennington offers 18 exclusive properties that have an unmatched setting, unspoiled beauty and unequalled serenity. Here, amid spectacular natural beauty rich in wildlife, a privileged group of people will create their own legacy of living by connecting to themselves, their families, one another and the wonders of creation.

KENTUCKY LAND



SALES.COM

BENNINGTON FIELDS



Bennington Fields is located in Boyle County just seven miles from Danville and the home of Centre College, often referred to as the Harvard of Kentucky.

In addition to being home to Bennington Fields, Boyle County itself is a thriving residential community with rolling, Bluegrass countryside, great shopping, regional medical center, golf courses, lakes, country club. Bennington Fields offers Estate lots two acres and up from \$22,900., Family Compounds of four acres and up from \$42,900. and Enclave lots of 15 acres to 20 acres from \$99,900. For more information about this remarkable community call 888-2-KY-LAND.

KENTUCKY LAND



SALES.COM



KENTUCKY LAND



SALES.COM

KENTUCKY LAND SALES • POST OFFICE BOX 97 • PERRYVILLE, KENTUCKY 40468 USA TEL: 888-2-KY-LAND (888-259-5263)



KENTUCKY LAND



SALES.COM

KENTUCKY LAND SALES • POST OFFICE BOX 97 • PERRYVILLE, KENTUCKY 40468 USA TEL: 888-2-KY-LAND (888-259-5263)

WESTVIEW FARMS



Westview Farms offers luxuriant building sites that have unsurpassed views. Just three miles from Historic Perryville, in preferred Boyle County.

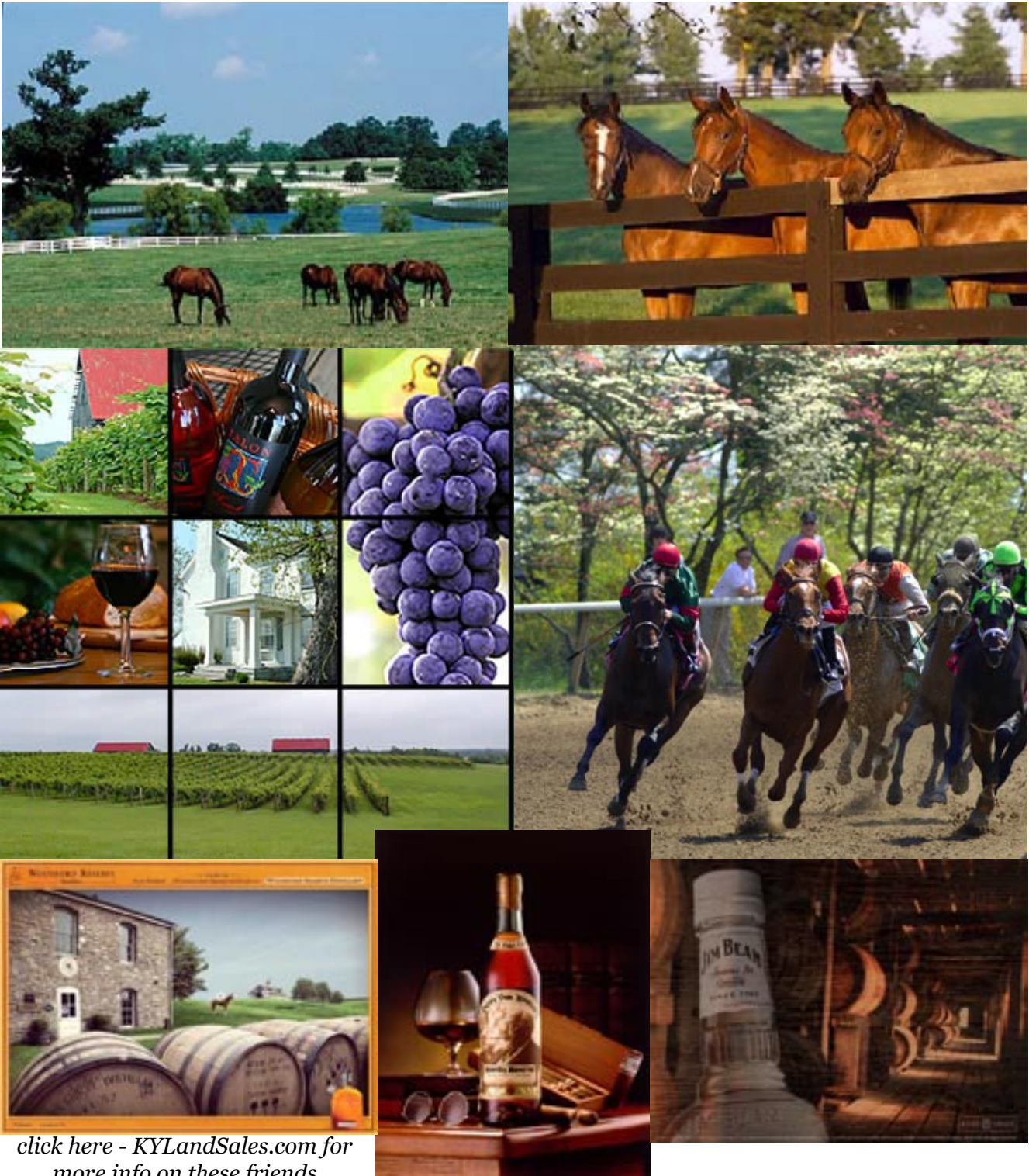
Discover deer, wild turkey, Canada geese and bobwhite quail in this world of enduring and ethereal beauty.

A rural paradise just waiting to enrich your soul and energize your spirit. 2 acre homesites to 8 acre homesites - just \$22,900. to \$56,900.

KENTUCKY LAND



SALES.COM



click here - KYLandSales.com for more info on these friends

KENTUCKY'S BLUEGRASS REGION IS THE EMBODIMENT OF ALL THAT IS GRACEFUL, COMFORTING AND GENTLE ABOUT THE SOUTH.

KENTUCKY LAND



SALES.COM

TRANQUILITY



The Bluegrass' four distinct seasons are never long and never harsh. Our cultural activities are many and are accessible. Beyond it's innate beauty, increasingly Kentucky is increasingly drawing people's attention to the kinder, gentler lifestyle it engenders. Here, neighbors are friends. Traffic is non-existent. Expenses are low. Culture is close-at-hand. Education is a priority. Local commerce is truly local.

All of which make this area a great place to raise a family, have a business or live economically in retirement. No wonder more and more people are finding that their version of the American Dream comes home to Bluegrass country. Now yours can too ...

Call today to find out how you can live the spirit that is the Bluegrass.

888-2-KY-LAND (888-259-5263)

KENTUCKY LAND



SALES.COM

CHRISMAN FARMS



Chrisman Farms is a private community just five miles to all of Danville's shopping and commerce. 18 private lots, 12 of which have a stream running through them.

Woods, open rolling, bluegrass fields, views and a stream - all close to town. Chrisman is a property that offers amenities that are often requested and rarely available all in one location.

A place created by nature and perfected by the people who live and love Chrisman Farms.

Private lots of 3 acres to 10 acres priced at \$19,900 to \$49,900.

KENTUCKY LAND



SALES.COM



KENTUCKY LAND



SALES.COM

KENTUCKY LAND SALES • POST OFFICE BOX 97 • PERRYVILLE, KENTUCKY 40468 USA TEL: 888-2-KY-LAND (888-259-5263)

TRADITION



Whether you are seeking your next homesite, corporate retreat or private hideaway, your haven awaits.

Let us show you the lifestyle.

KENTUCKY LAND



SALES.COM

PASS IT ON



The boys love our boating excursions on Lake Herrington, just minutes from Danville. At 32 miles long, Herrington is the perfect lake to boat, water ski, jet ski or jet boat.

KENTUCKY LAND



SALES.COM

LEGACY



We invite you to visit and highly recommend “the Bluegrass”. Our offices are located in Danville and Perryville, in the center of the state. We can help you arrange an enjoyable site visit. Kentucky Land Sales has been known to only a privileged few, who have come here to obtain an acquisition experience that is like no other. Call today to find out how you can live the spirit that is the Bluegrass. 888-2-KY-LAND (888-259-5263)

KENTUCKY LAND



SALES.COM